

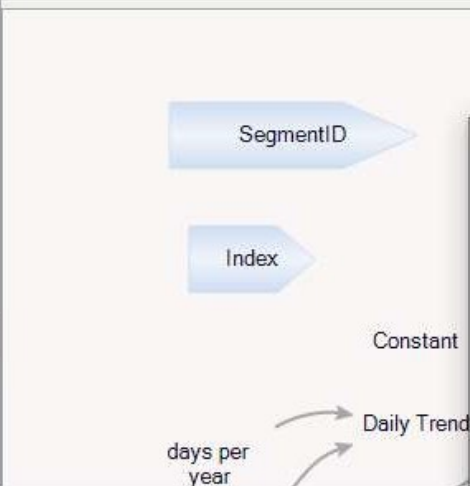
Overview

- Entity Types
  - Model
  - Segment
- Components
- Macros
- Data Entity Types
- Time Series Data
- Entity Initialization D...
- Data Sources
  - File: Segment...
  - BigFit (opt ite...
- Data Sets
- Run Control
- Results (0)
- Analysis
- Save Lists

Picker

Model Segment

Segment --- SegmentID



Ventury

Access to the path 'C:\Users\Public\Documents\Ventury Projects\Sample Projects\Applications\Wilshire v2\Data\Segments.vixml' is denied.

An unexpected error has occurred in Ventury. If you believe that the error is not in your model, please contact support services. Debugging information has been copied to the clipboard - you are encouraged to paste it into any email you send to support services.

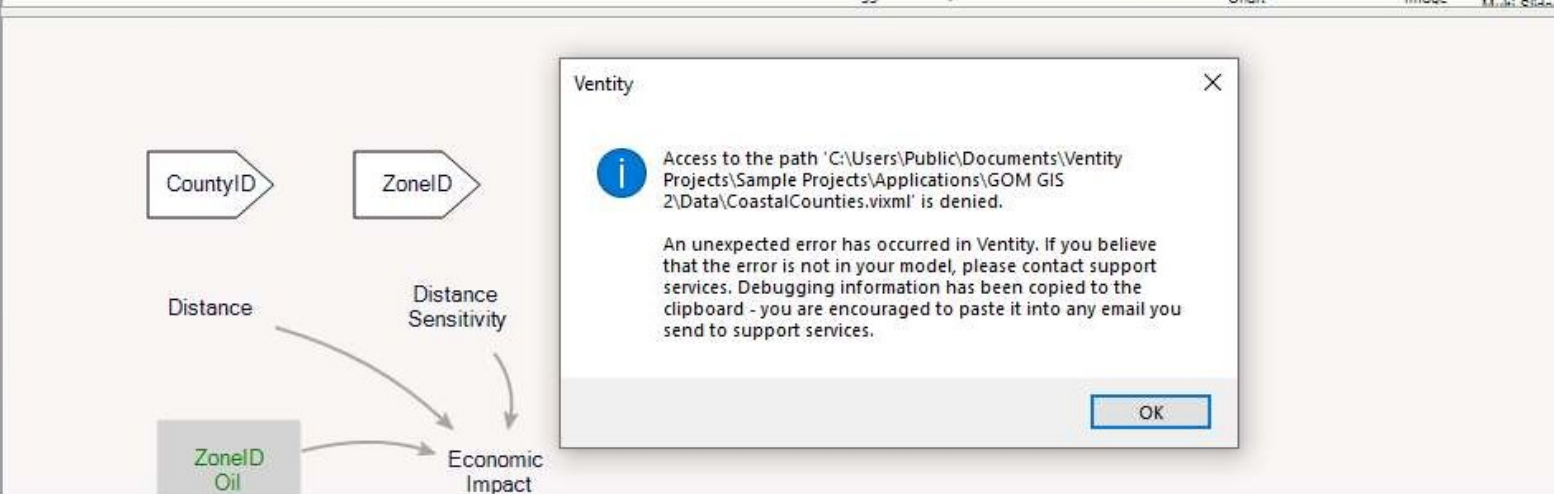
OK

Console

```

03/31/2021 16:51:45: Info: Entity Initialization Data: The external data file: C:\Users\Public\Documents\Ventury Projects\Sample Projects\Applications\Wilshire
03/31/2021 16:51:46: Loaded model Wilshire v2 from C:\Users\Public\Documents\Ventury Projects\Sample Projects\Applications\Wilshire v2\Wilshire v2.vmdl.
03/31/2021 16:51:50: Info: Entity Initialization Data: The external data file: C:\Users\Public\Documents\Ventury Projects\Sample Projects\Applications\Wilshire
    
```

- Entity Types
  - ☐ County
  - ☒ County[]
  - ☐ CountyZone
  - ☐ Gulf
  - ☐ Model
  - ☐ OffshoreZone
  - ☐ Platform
  - ☒ Platform[]
  - ☒ Platform[Zon...
  - ☐ ZoneZone
  - ☒ ZoneZone[]
- Components
- Macros
- Data Entity Types
- Time Series Data



```

04/01/2021 10:52:04: Info: Entity Initialization Data: The external data file: C:\Users\Public\Documents\Ventity Projects\Sample Projects\Applications\GOM GIS 2\Data\CoastalCounties.vixml is denied.
04/01/2021 10:52:05: Loaded model GOM GIS 2 from C:\Users\Public\Documents\Ventity Projects\Sample Projects\Applications\GOM GIS 2\GOM GIS 2.vmdl.
04/01/2021 10:52:22: Info: Entity Initialization Data: The external data file: C:\Users\Public\Documents\Ventity Projects\Sample Projects\Applications\GOM GIS 2\Data\CoastalCounties.vixml is denied.
    
```

Overview

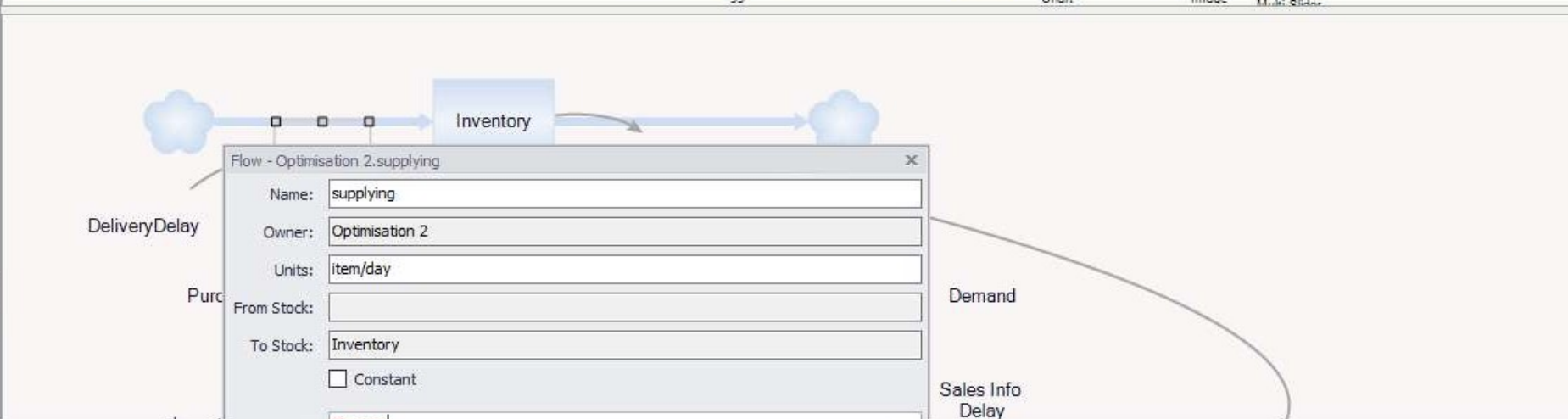
- Entity Types
  - Model
  - Optimisation 2
  - Optimisation 2D
- Components
- Macros
- Data Entity Types
- Time Series Data
- Entity Initialization D...
- Data Sources
- Data Sets
- No Data
- Run Control
- Results (0)
- Analysis
- Optimization

Picker

type

Model Optimisation 2

Optimisation 2 --- Optimisation 2ID



Flow - Optimisation 2.supplying

Name: supplying

Owner: Optimisation 2

Units: item/day

From Stock:

To Stock: Inventory

☐ Constant

Delay

M DELAY1(input, delay time)  
 M DELAY1I(input, delay time, initial Value)  
 M DELAY3(input, delay time)  
 M DELAY3I(input, delay time, initial Value)  
 / DelayInformation(variable, timedelay, earlyValue)

Description:

Console

03/31/2021 16:50:35: L

Optimisation\Optimisation 2b\Optimisation 2b.vmdl.

Overview

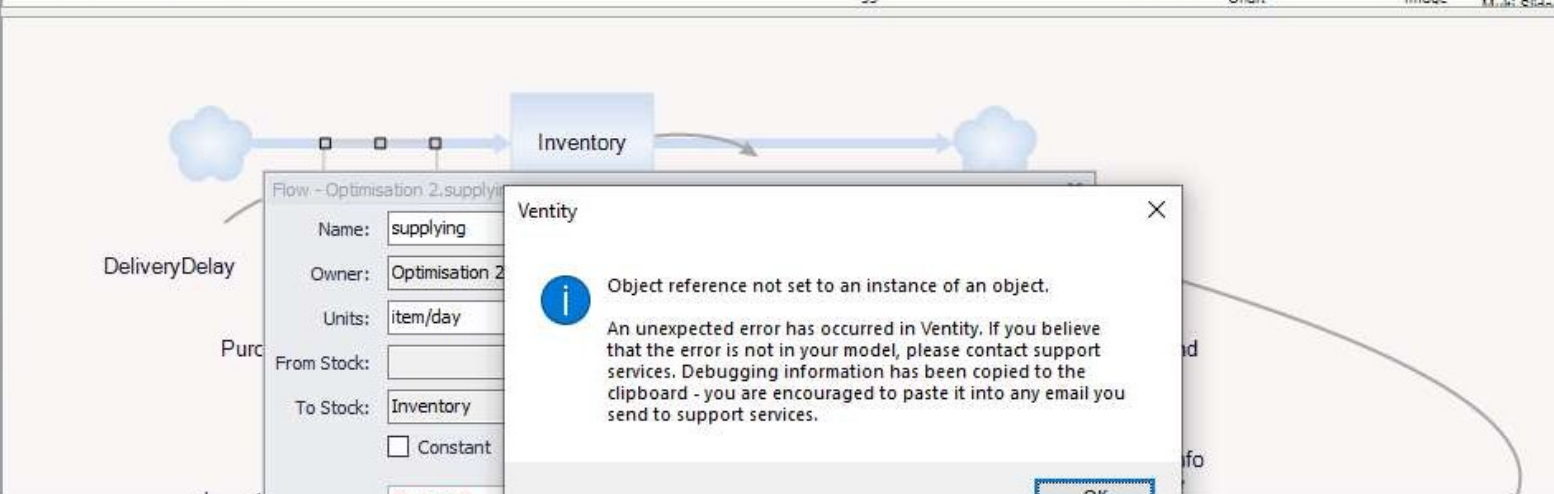
- Entity Types
  - Model
  - Optimisation 2
  - Optimisation 2b
- Components
- Macros
- Data Entity Types
- Time Series Data
- Entity Initialization D...
- Data Sources
- Data Sets
- No Data
- Run Control
- Results (0)
- Analysis
- Optimization

Picker

type

Model Optimisation 2

Optimisation 2 --- Optimisation 2b



Console

03/31/2021 16:50:35: L

=

Description:

DelayI

Ventity

Name: supplying  
 Owner: Optimisation 2  
 Units: item/day  
 From Stock:  
 To Stock: Inventory  
☐ Constant

An unexpected error has occurred in Ventity. If you believe that the error is not in your model, please contact support services. Debugging information has been copied to the clipboard - you are encouraged to paste it into any email you send to support services.

OK

Optimisation\Optimisation 2b\Optimisation 2b.vmdl.